

INTRODUCTION

EN



USB Connection Cable
included



PRG007 is the new programming interface for alarms, cdl, parking now available and future production. It's Windows® sw based on. After downloading and installing the software to manage the PRG007 interface you can work in local directly on your PC. Connection is realized by a std. USB port communication. Connection between PRG007 interface and MetaSystem devices is realized by using the same harness kit available for the PDC Programmer. In case you have not these harness kit available please order them with reference to PROGRAMMABLE DEVICES . Kit code is 2848479.

Main Functions :

- **Function set up**: possibility to read and set up accessory functions with a very simple selection .
- **Protocol set up** : possibilità to set up all protocol already available and add the new ones available after software update with a very rapid selection.
- **Can Bus protocol update**: the new protocols available under tech area on www.metasystem.it/cardealer site can be easily add to the PRG007 interface.
- **Most frequent set up** : possibility to store your most frequent set up . They can be easily load and used to program many units with the same set up.

HARDWARE AND SOFTWARE REQUIREMENTS

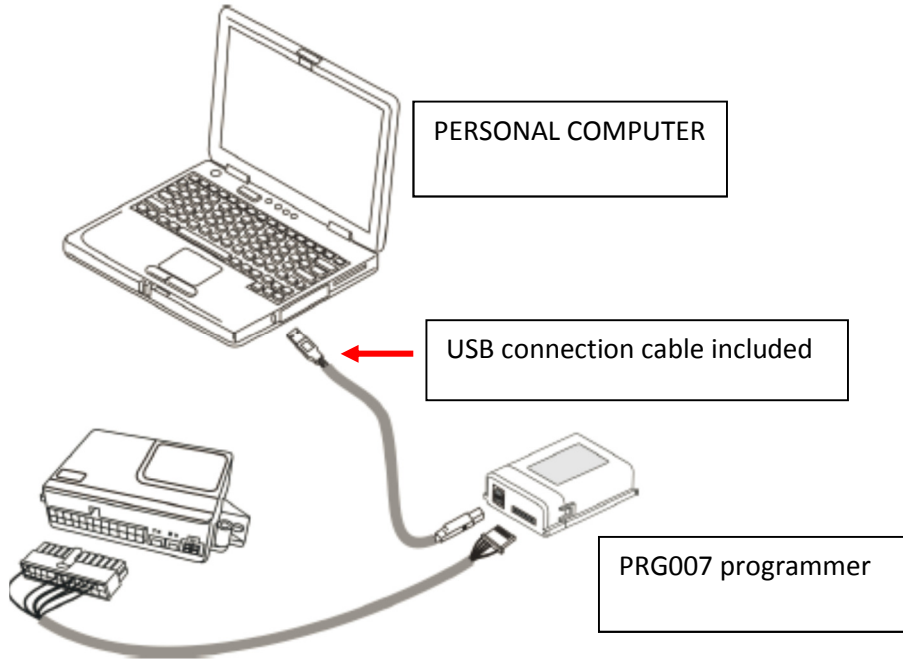
Microsoft Windows® XP Home, XP Professional, Vista, Windows 7
Not compatible with Apple Mac / Linux.
USB Port 2.0

PROGRAMMABLE DEVICES

Here below the list of MSY devices already programmable with the harness required .

MSY Devices	Harness between PRG007 and MY Devices (Same used in PDC programmer)
EASY CAN	2855570
M325	2855571
M327	2855571

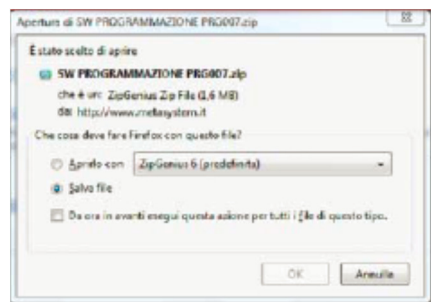
CONNECTION AND SET UP



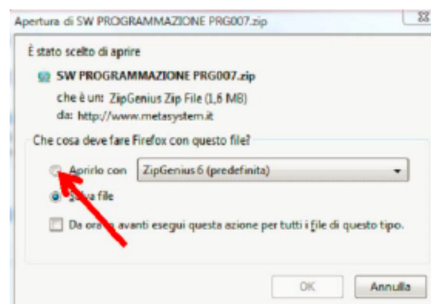
Access to www.metasystem.it/cardealer site, LAIKA Area / Programmer.

- 1 Before proceeding please download the NET 4.0 Framework
- 2 This MICROSOFT .NET Framework 4.0 is necessary to start up correctly installation of PRG007 interface program .
- 2 Now download and install the PRG007 software called "SOFTWARE PROGRAMMAZIONE PRG007".

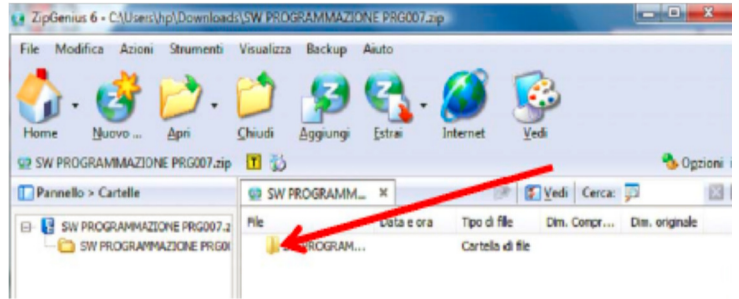
3 Click on "SOFTWARE PROGRAMMAZIONE PRG007".



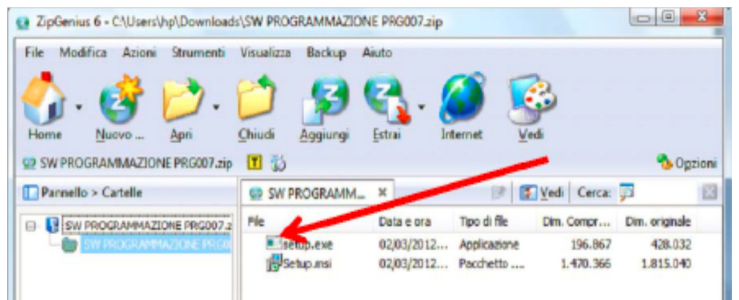
4 Select OPEN and OPEN WITH selecting the program to unzip.



5 Click on the SW PROGRAMMAZIONE PRG007 folder.



6 Click on SET UP.exe file



After completing installation you will have the following icon in your desktop or tool bar



Now connect the PRG007 and MSY devices as shown in the fig. above.

After connection the led of the PRG007 start to flash . This means that it is correctly supplied by the USB port.

After connection wait till the automatic installation of the driver is completed.

DEVICE PROGRAMMING

Open the PRG007 software by the icon.



You will have the following windows (we show the Easy Can Digital screen as example)

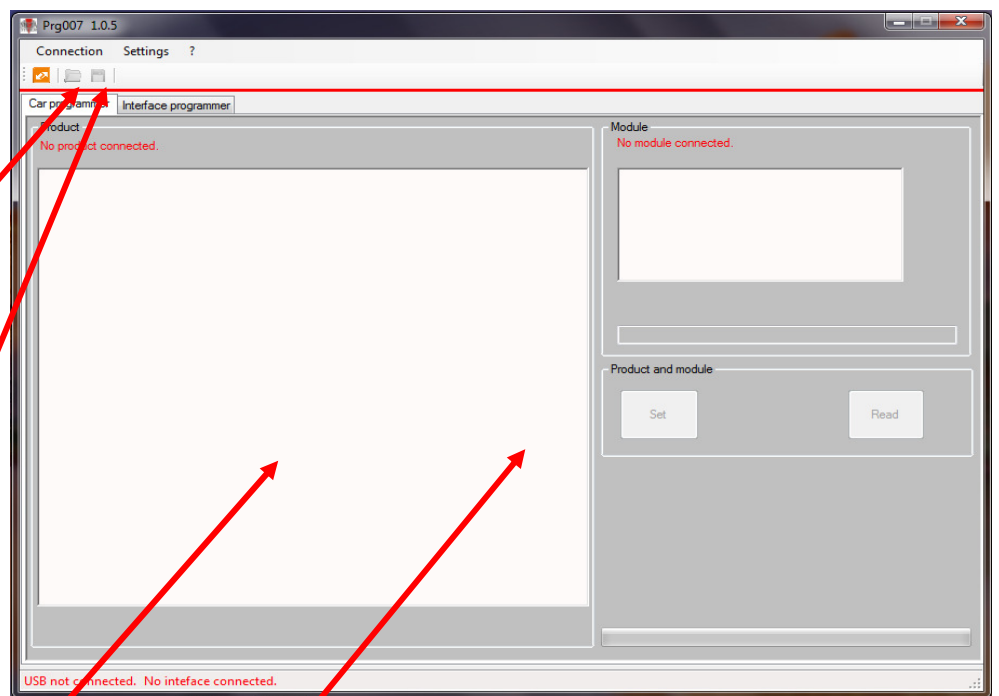
"CONNECT REBOOT PRODUCT". Red button for device connection.

SW REVISION: you will find the last updated version on www.metasystem.it site

"SETTINGS" for language selection

"OPEN FILE" to upload stored configuration

"SAVE FILE" to store a frequent configuration that you want to upload frequently and repeat in many units.

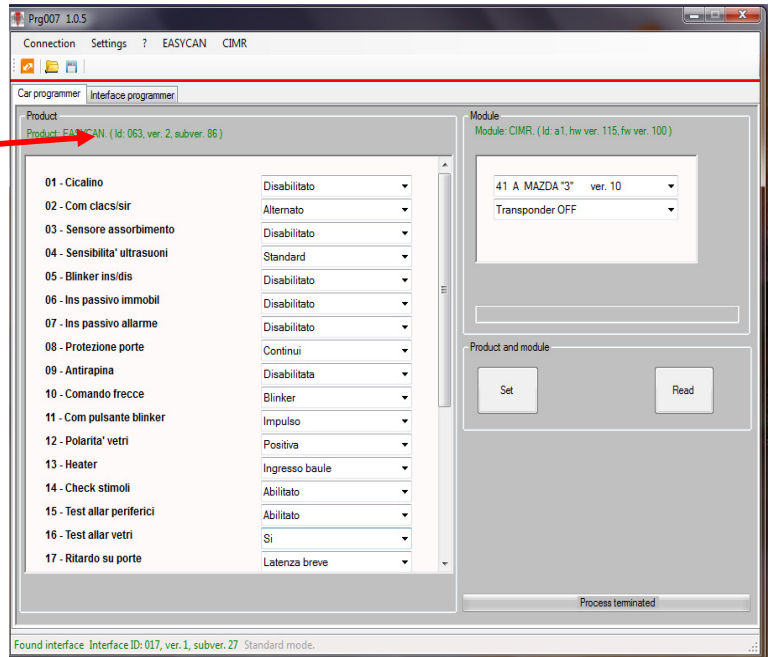


"SET" to program Module configuration and accessory functions

"READ" to read parameters

Connection to the device is automatic running but you can force with "CONNECT REBOOT PRODUCT" button as shown above.

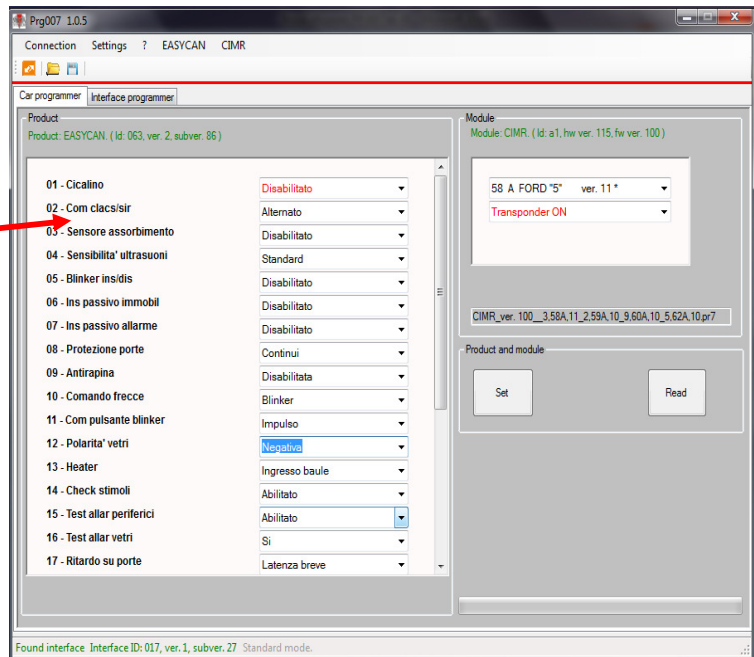
Connected devices SW and HW revision are shown in green



After completing modifications and select module command it is possible to set up all the MSY Device (Base + module) with SET command . all modifications are shown in red. READ command permit to read again all parameters setted up.

FUNCTIONS SELECTION:
see manuals or pdf list for more details and explanations.

MODULE SET UP AND
TRANSPONDER FUNCTION
SELECTION:
See car scheme and application list available on www.metasytem.it site

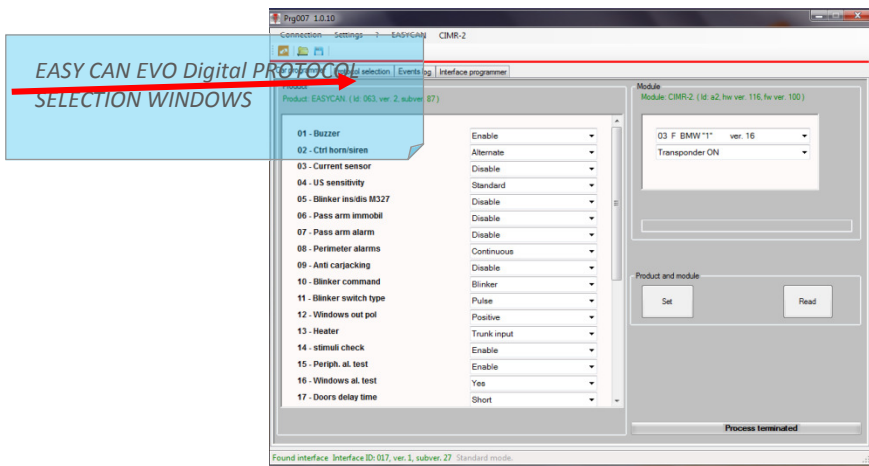


SOFTWARE UPDATE

All the software update available will be upload in the tech area of the www.metasystem.it site and comunicate with usual Tech News . To complete software update and download the update see on PRG007 folder and procede as described in "CONNECTION AND SET UP" paragraph from pont 2 on.

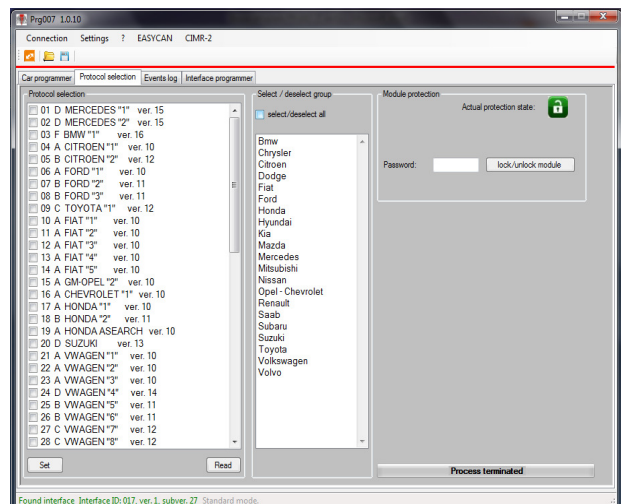
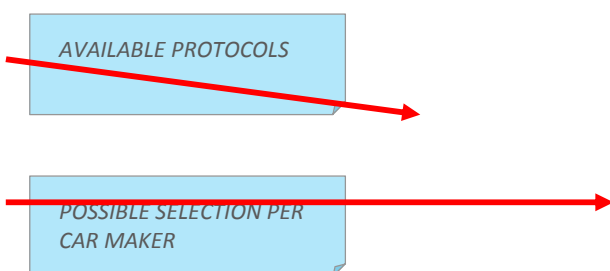
ADVANCED FUNCTIONS FOR EASY CAN EVO (only for authorized importer)

PRG007 allows to acces new advanced functions for the new Easy Can Evo Digital alarm unit. Those functions enable the possibility to customize the available protocol selections with the main brand of car maker. All these selection can be "protected" under password to restrict the access.

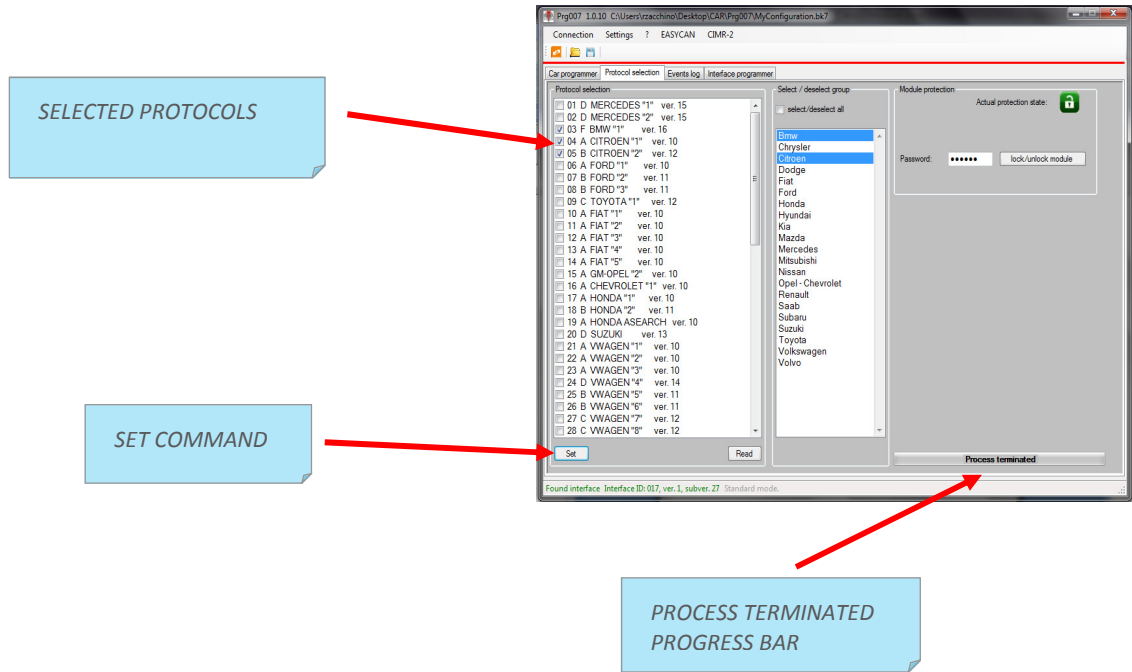


CUSTOMIZATION OF CAN BUS PROTOCOL SELECTION:

In the windows on the left all protocol selected are shown. In the windows on the right all possible selection per car maker are shown.



Select car maker desired (eg. BMW and CITROEN). Windows on the left will automatically point out car maker protocols. Press "SET" command to confirm selection to the module. Wait until "PROCESS TERMINATED" message will appear on the progress bar.



Now it is possible to "Block" the protocol selection under password (psw. must be formed by 6 numbers)

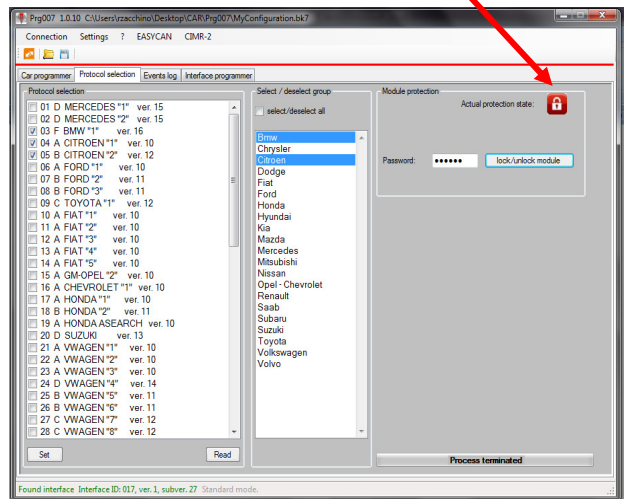
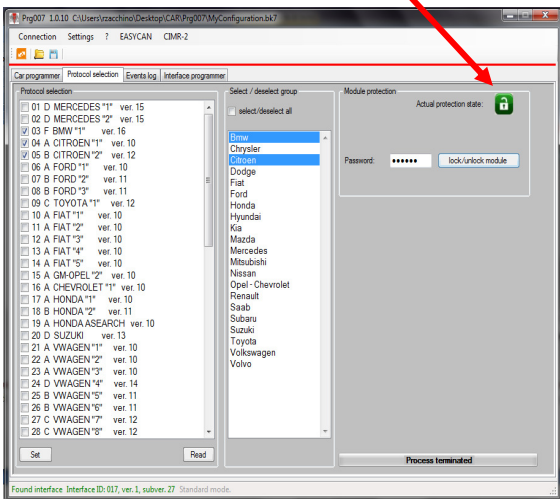
After inserting password in the "PASSWORD" windows set command "LOCK/UNLOCK module". The icon padlock becomes RED. It means that the module protection is active.



The access to the module configuration setting is now available just after password inserting. For safety reason there's no any reset procedure when the module is under password !

GREEN FLAG: FREE ACCESS.

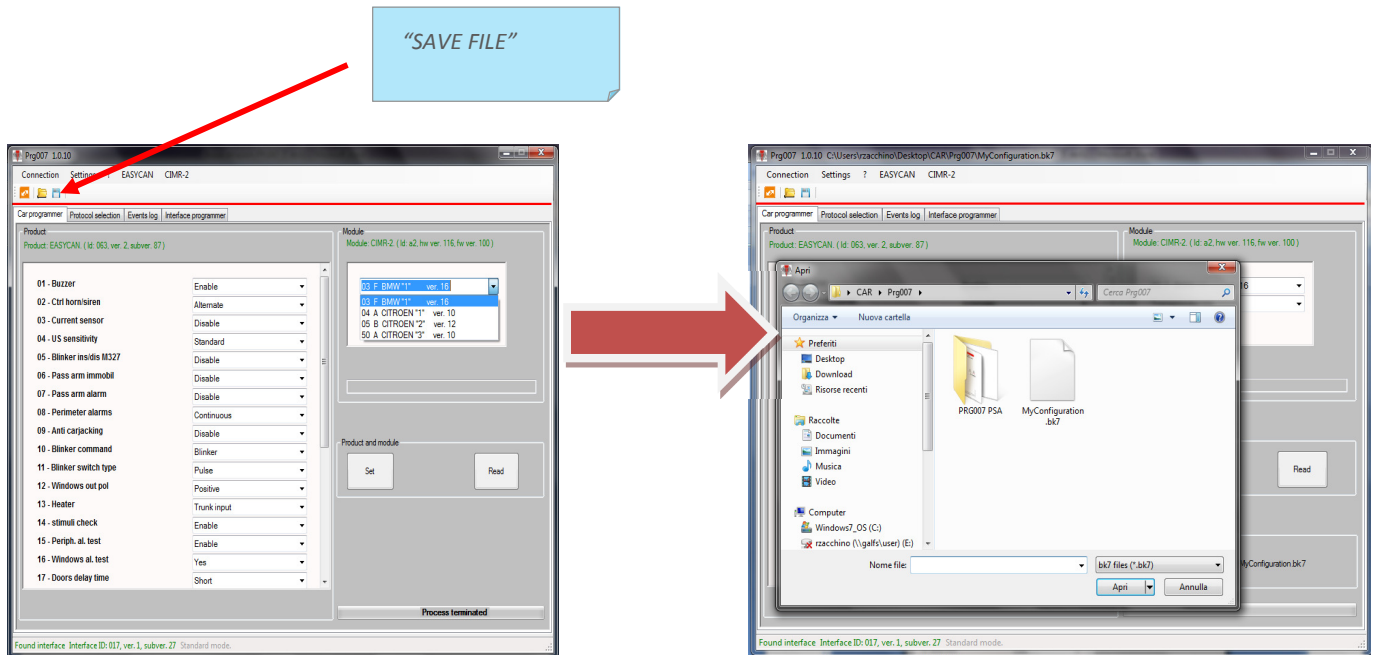
RED FLAG: ACCESS DENIED BY PASSWORD. Module protection active.



To complete setting operations proceed as following on “CAR PROGRAMMER” screen:

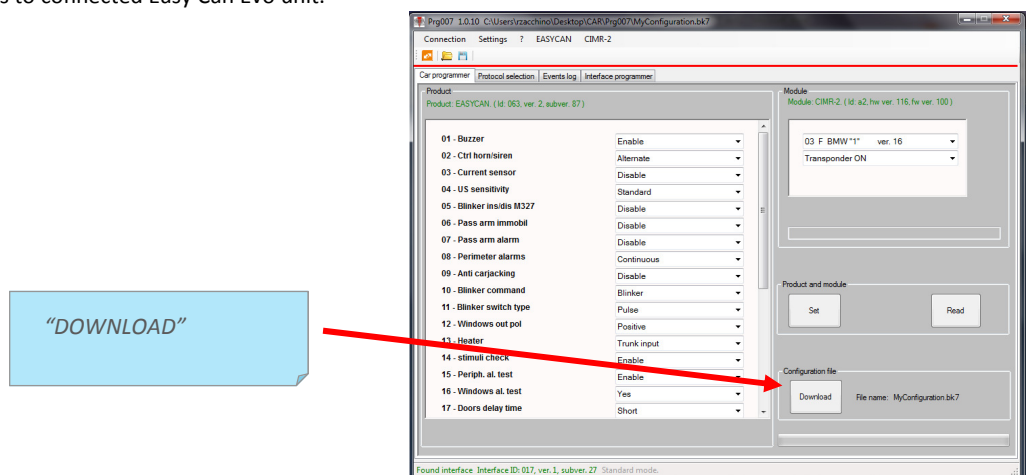
On the “MODULE” windows BMW and CITROEN will appear now as only selectable. Proceed with module setting. All customization can be stored with “SAVE FILE”.

The saved file will be automatically created in a Easy Can directory. In any case it will be possible to move the stored file where you prefer in your personal folder.



To set up more Easy Can Evo units with the stored setting file it will be possible to upload with “OPEN FILE”. Point out the stored file “e.g. My Configuration”. On “CAR PROGRAMMER” screen will appear a new windows “CONFIGURATION FILE” with “DOWNLOAD” command . Press “DOWNLOAD” and wait till process is terminated (see tool bar on the bottom right)

Press “SET” to transfer all settings to connected Easy Can Evo unit.



Connect a new Easy Can Evo unit to the PRG007 interface. Wait till the connection is done and press “DOWNLOAD” and “SET” command. Wait till progress bar have finished. Now the new Easy Can Evo unit is programmed and can be disconnected.